



Therapies Available

Including speech, occupational, respiratory and physical therapy.

Sapphire at Gresham accepts multiple insurances which consist of Medicare/Medicaid and some HMOs.

One time contracts may be pre-authorized in special circumstances.

Our Ventilator Assistance Program Mission

To successfully transition individuals from mechanical ventilation, increase their level of independence, provide education and support, as well as promote their highest quality of life.



QR CODE LEADS TO A VIDEO TOUR OF THE UNIT

Respiratory therapists have been specially trained to work with the fragile population of ventilated patients to provide the best care possible

WE ARE PARTNERED WITH:

Altea Healthcare

PNW Pharmacy

Optum

Consonus

Kashi Laboratory

Exigis Diagnostics

Rouge Psych Consultants

United Wound Healing

Forest Park Hospice

*For admissions, please contact
our admissions coordinator at 503-310-1068
or our facility at 503-666-5600.*

405 NE 5th St
Gresham, OR 97030
www.GreshamCareAndRehab.com

Skilled Nursing Ventilator and Tracheostomy Program



SAPPHIRE AT GRESHAM

Post Acute Care and Rehabilitation

VENTILATOR & TRACHEOSTOMY ASSISTANCE PROGRAM:

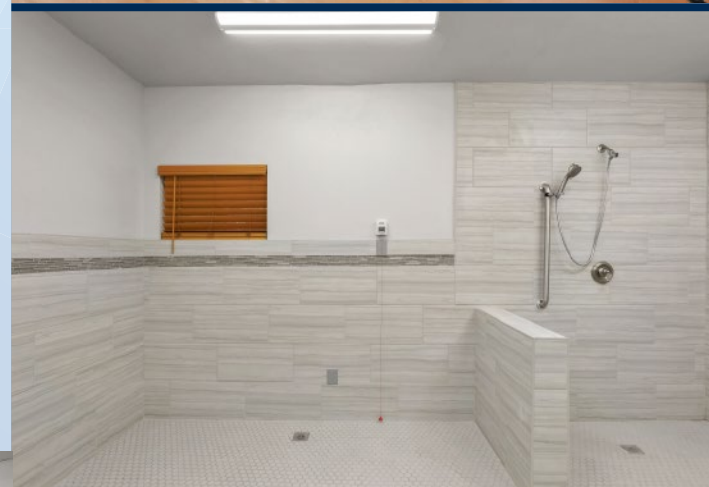
- Long term or short term ventilator care
- Recently transitioned from Ventilator
- Trach Stabilization/decannulation
- 24/7 Respiratory therapist on-site working hand in hand with nursing
- Patient-centered care
- Oxygen therapy
- Aerosol and nebulizer therapies
- Bronchial hygiene therapy
- Secretion management
- Continuous pulse oximetry monitoring
- BIPAP and CPAP
- Pulmonary disease management
- Cough assist
- 24/7 on call pulmonologist
- Step down tracheostomy

Sapphire at Gresham is the first Skilled Nursing facility in Oregon to be endorsed by the state to have a ventilation assistance program.

Our newly renovated, dedicated Respiratory Care Unit provides a person-centered approach to caring for 20 residents with a team of respiratory therapists, pulmonologists, doctors, nurse practitioners, nurses and certified nursing assistants.

All staff have had specialized training approved by state board, to ensure that your loved one is receiving the best possible patient centered care possible.

We are following Covid recommendations - Safety is our number one priority.



SAPPHIRE AT GRESHAM

503-666-5600 | www.greshamcareandrehab.com